

NGDP

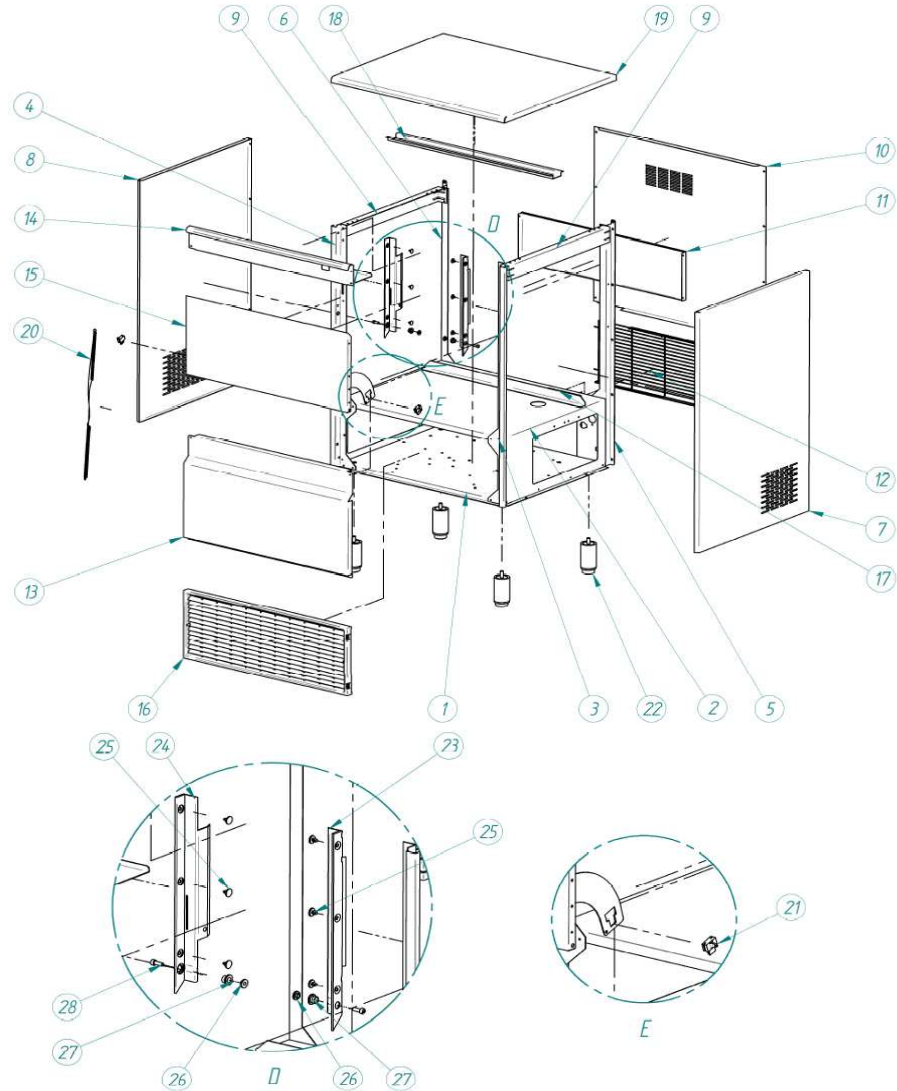
ITV
ICE makers



DESPIECE / REPUESTOS
EXPLODED VIEW / SPARE PARTS
EXPLOSIONSZEICHNUNG / ERSATZTEILE
VUE ÉCLATÉE / PIÈCES DÉTACHÉES
ESPLOSO / RICAMBI

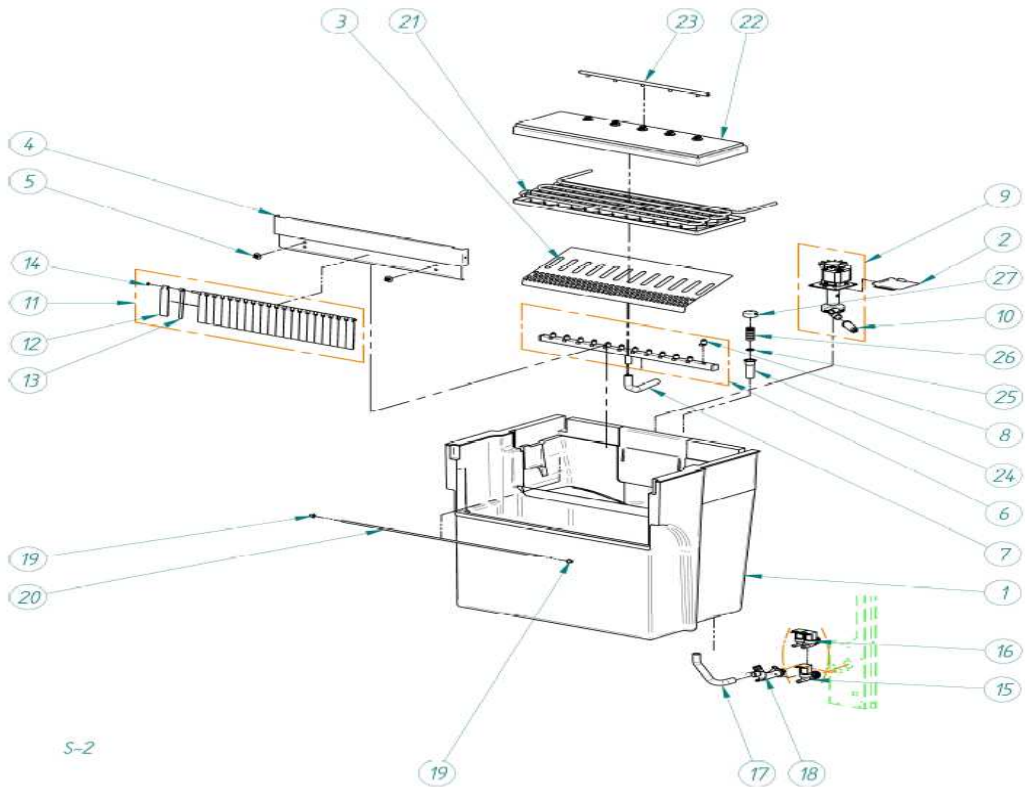
ITV | ICE makers **SERVICE** 

CABINET



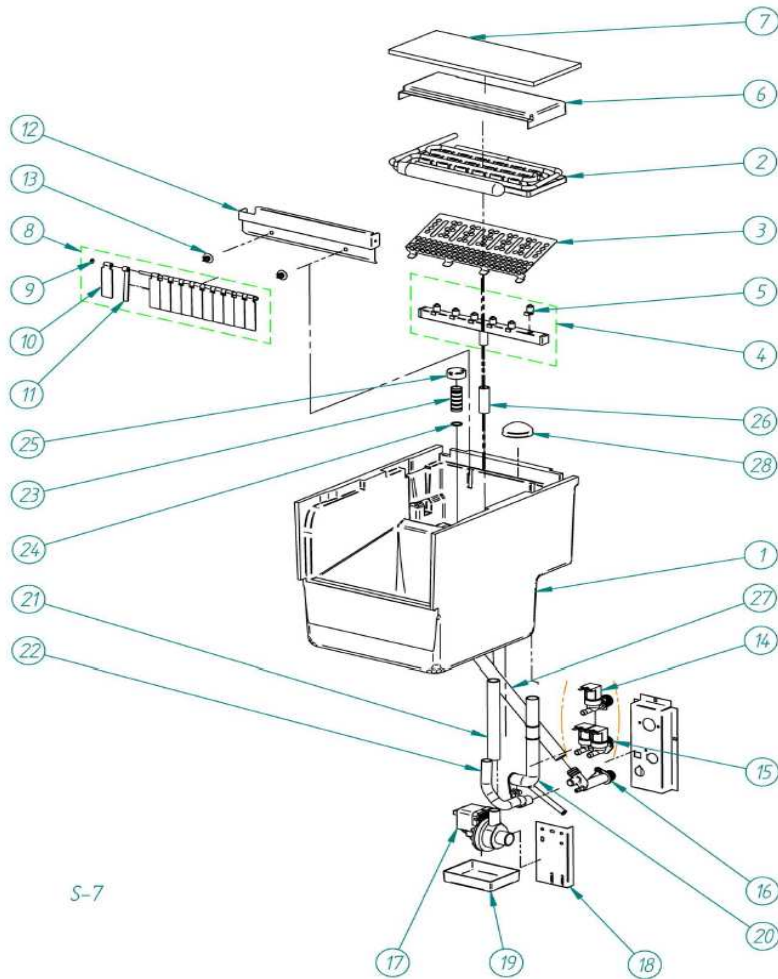
	DESCRIPTION						
	NG30	NG 35, 45	MODEL NG60	NG80	NG110	NG150	
1	BASEMENT	2836	808	4160	1734	3258	4313
2	SUPPORT	3078	506	4159	1735	3421	4314
3	FRONT RIGHT COLUMN	3292	159		1736		3434
4	FRONT LEFT COLUMN	3923	160		1737		3435
5	REAR RIGHT COLUMN	3407	207		1775		3746
6	REAR LEFT COLUMN	3406	161		1770		3436
7	RIGHT PANEL	4219	489		1900		3969
8	LEFT PANEL	4220	490		1901		3970
9	BRACE	3520		557			3778
10	REAR COVER	4223	635	4172	1807	3785	4320
11	REAR REINFORCEMENT (installed until 1283180)	3528	2112	4171		1800	4325
12	REAR GRILL	2453	1728	4088		2192	4849
13	LOWER FRONT PANEL	3079	418	4186	1790	3770	4315
14	UPPER FRONT PANEL	4946	421	4169		1791	4316
15	DOOR	5072	5030	5791		5237	5857
16	FRONT GRILL	4185	4063	4186		4188	4187
17	BRIDGE ANGLE	---	---	---	2331	4984	4985
18	COVER REINFORCEMENT	---	---	---	4146		4326
19	TOP COVER	3387	920	4170	1792	3773	4317
20	DOOR SPRING						702
21	DOOR BUMPER						156
22	LEG						1478
23	RIGHT DOOR GUARD						82
24	LEFT DOOR GUARD						83
25	CLIP						113
26	DOOR AXE BUSH						155
27	DOOR AXE BEARING						1001
28	DOOR SCREW						392

BIN & HIDRAULIC PARTS



S-2

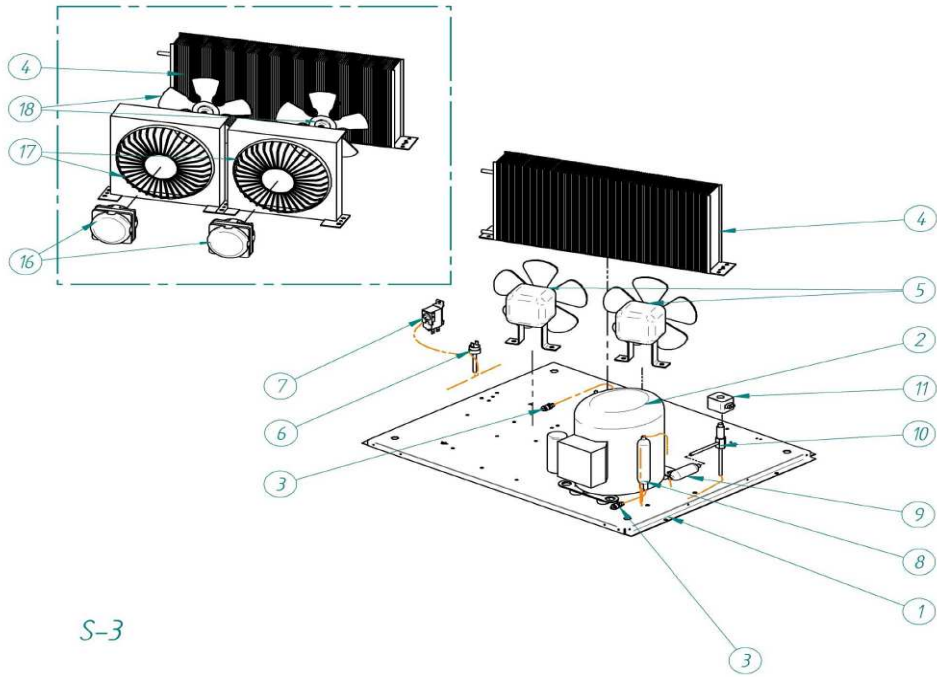
	DESCRIPTION	MODEL				
		NG 35, 45	NG60	NG80	NG110	NG150
1	STOCK BIN	7452				
2	WATER BIN COVER	1938	7388	7128	7322	7487
	ICE CUBES RAMP					
		DELTA-GALA-ALFA 4673	1147	2186	3805	4323
		SUPER STAR 4673	4351	4258	4284	4322
3	CURTAIN HOLDER	121	4055	2187		4193
4	CURTAIN CLIP	3533				
5	COLLECTOR	7464	7406	7335	7350	7485
		SUPER STAR 7464	7439	7432	7433	7486
6	FORCE PIPE	2148	2191			2148+576+2191
7	SPRAY NOZZLE	526				
8	PUMP	220V/50HZ 5563		5405	5494	5927
		115V/60HZ 5850		5932		---
9	PUMP FILTER	1712				
10	COMPLETE CURTAIN	5900	5837	5395		5929
11	EXTERIOR CURTAIN	606				
12	INSIDE CURTAIN	605				
13	CURTAIN JOINT	107				
14	WATER VALVE 1B					
	Up to serial number 1320000	329				
	From serial number 1320000	7685		329		
15	WATER VALVE 2B (water condensed)					
	Up to serial number 1320000	404				
	From serial number 1320000	7691		404		7691
16	DRAIN PIPE	2222				
17	DRAIN COLLECTOR	363				
18	THERMOSTAT JOINT	666				
19	THERMOSTAT TUBE	---	5437	5422		5933
20	EVAPORATOR					
		ALFA 20gr 7030	7395	7258	7263	7479
		GALA 30gr 7423	7400	7156	7352	7480
		DELTA 40 gr 7031	7401	7252	7095	7437
		SUPER STAR 60gr 7032	7436	7323	7355	7427
21	EVAPORATOR COVER	5899	5418	5406	5491	5928
22	WATER DISTRIBUTOR					
	Up to serial number 1320000	2647	911			
	From serial number 1320000	---	---	---	911	
23	OVERFLOW DRAIN	4425				
24	JOINT	4496				---
25	OVERFLOW PIPE	4426				1134
26	OVERFLOW PIPE CAP	4427				



S-7

	DESCRIPTION	MODEL
1	STOCK BIN	NG 30
	EVAPORATOR	7502
2		
	ALFA 20gr	7492
	GALA 30gr	7491
	DELTA 40 gr	7490
3	ICE CUBES RAMP	4945
5	NOZZLE	526
6	EVAPORATOR COVER	5948
7	EVAPORATOR INSULATION	---
8	COMPLETE CURTAIN	5968
9	JOINT	107
10	EXTERIOR CURTAIN	1213
11	INSIDE CURTAIN	1212
12	EVAPORATOR SUPPORT	4697
13	CLIP	3533
14	WATER VALVE 1B	1673
15	WATER VALVE 2B (water condensed)	1674
16	DRAIN COLLECTOR	363
	WATER PUMP 220V/50HZ	4769
17	WATER PUMP 220V/60HZ	32047
	WATER PUMP 115V/60HZ	31998
18	PUMP SUPPORT	4956
19	PUMP TRAY	4521
20	SUCTION PIPE	4961
21	FORCE PIPE	4533
22	DRAIN PIPE	2222
23	OVERFLOW PIPE	4426
24	SEAL JOINT	4496
25	OVERFLOW PIPE CAP	4427
26	COLLECTOR PIPE	993
27	PRODUCTION DRAIN	2752
28	FILTER	580

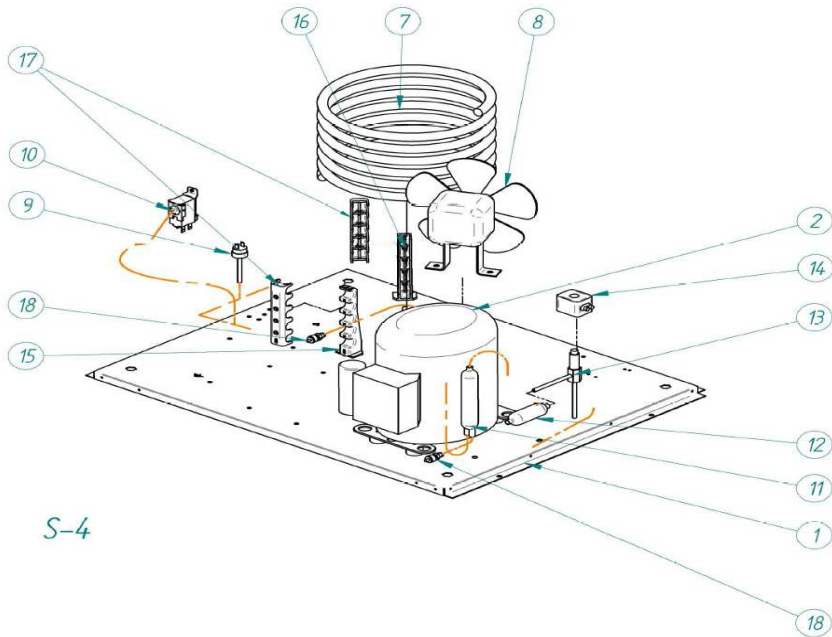
AIR CONDENSER UNIT



S-3

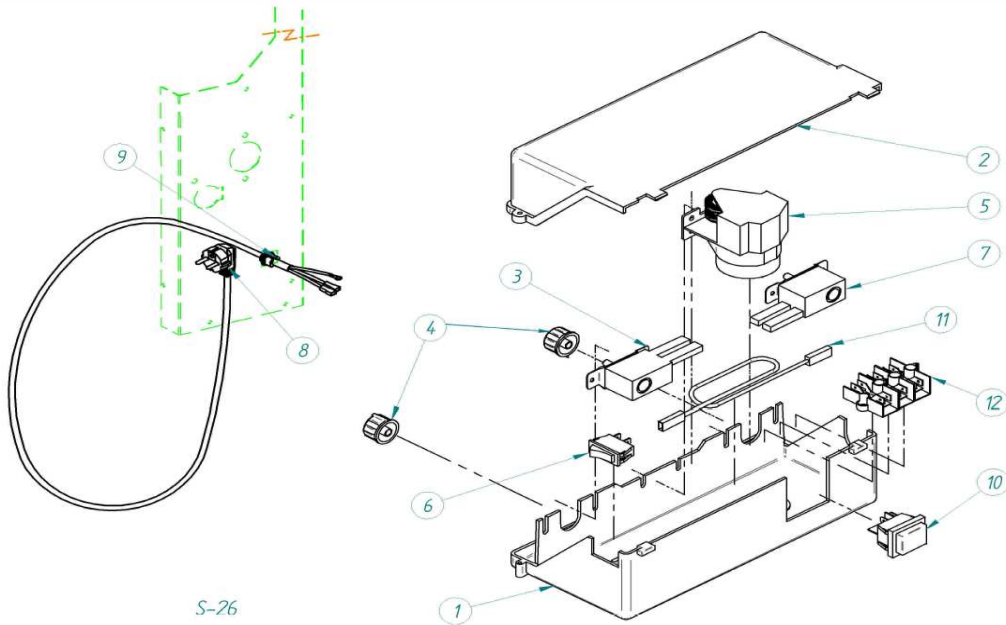
	DESCRIPTION	MODEL						
		NG 30	NG 35	NG 45	NG60	NG80	NG110	NG150
1	BASE	2836	808		4160	1734	3258	4313
2	COMPRESSOR	220V/50Hz	6005		6515	8438	30439	30441
		220V/60Hz	1092	81093	81095	81098	31099	32029
		115V/60Hz	82801	82701	4827	82803	32808	---
3	CHARGING VALVE				335			
4	CONDENSER		2541			2593		2618
		CONDENSER 220V/60Hz	491	8327	486	487	589	2593
	CONDENSER 115V/60Hz	491	8327	486	487	2867	1052	-
5	FAN	---	28+4887			444+4040		
6	HIGH PRESSURE SWITCH	334						
7	CONDENSATION PRESSURE SWITCH	7476E				2507		
8	DRIER	1717				2560		
9	HOT GAS VALVE FILTER	448A						
10	HOT GAS VALVE	1473					843	
11	COL	220V/50HZ	5173					
		115V/60HZ	5414					
16	FAN MOTOR	2170		28	444 X 2	4131	4230	
17	CONDENSING BAFFLE	---				2433	2435	
18	FAN BLADE	4040		4887	4040 X 2	4040	4495	

WATR CONDENSER UNIT



S-4

DESCRIPTION		MODEL						
		NG 30	NG 35	NG 45	NG60	NG80	NG110	NG150
1	BASE	2836	808		4160	1734	3258	4313
COMPRESSOR								
2		220V/50Hz	6005		6515	8438	30439	30441
		220V/60H	1092	81093	81095	81098	31099	32029
		115V/60H	82801	82701	4827	82803	32808	---
7	WATER CONDENSER	5736	5242	5243	5244		5246	3267
8	FAN	2170+587	2170+4040			444+4040		2170+587
9	HIGH PRESSURE SWITCH				334			
10	CONDENSATING PRESSURE SWITCH		7476E				2507	
11	DRIER			1717				2560
12	HOT GAS VALVE FILTER				448A			
13	HOT GAS VALVE				1473			843
COIL								
14		220V/50HZ			5173			
		115V/60HZ			5414			
15	CONDENSER SUPPORT				4036			
16	CONDENSER SUPPORT				4037			
17	CONDENSER SUPPORT				4038			
18	CHARGING VALVE				335			



S-26

	DESCRIPTION					
	NG30	NG 35, 45	NG60	NG80	NG110	NG150
1	BASE					
2	COVER					
3	CYCLE THERMOSTAT					
4	THERMOSTAT CONTROL					
TIMER						
220V/50HZ						
	ALFA	380C		4864C		
	GALA	4864C		380C		
	DELTA	4864C		380C		
	SUPER STAR	---	380C		382C	
220V/60HZ						
5	ALFA		4864C			
	GALA		380C			
	DELTA	---	---	380C		
	SUPER STAR	---		382C		
115V/60HZ						
	ALFA	4865C		2764C		4864C
	GALA	4865C		2764C		4864C
	DELTA			2764C		
	SUPER STAR	---		2764C		
6	CLEANING SWITCH					
7	STOCK THERMOSTAT					
	SUCKO PLUG					
8		220V/50HZ		408		
		208-230V/60HZ		3675		
		115V/60HZ		2771		
9	WIRING FLANGE					
10	MAIN SWITCH					
	RESISTANCE PVC 220V					
	RESISTANCE PVC 115V					
12	CONNECTOR					
	5177 X 3					