
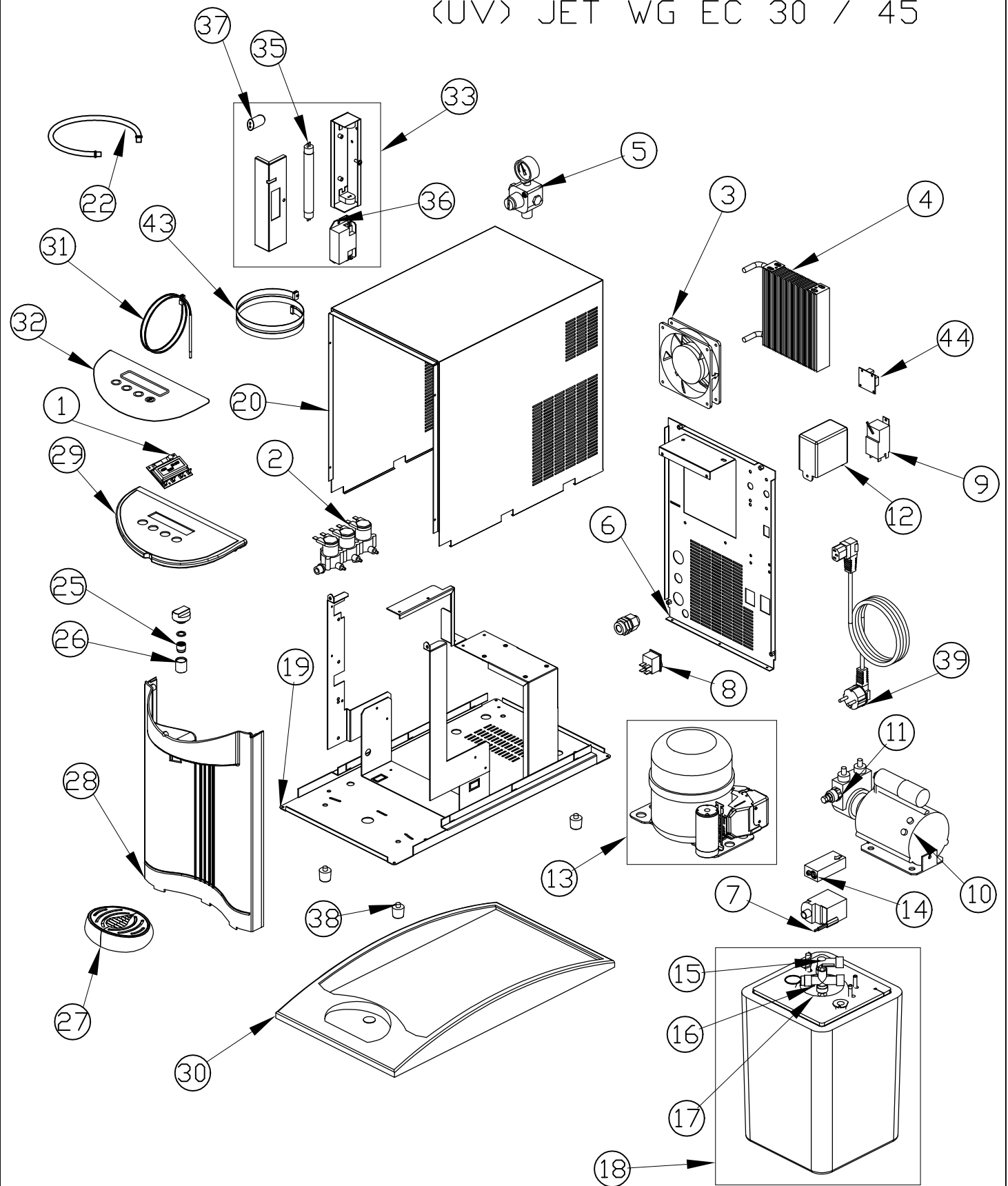


<UV> JET TOP 30/45 WG (EC)

Macchina/e e Modello/i	<UV> JET TOP 30/45 WG (EC)	Data	10-11-08
Descrizione		SCHEMA IDRICO	
		Note	
<small>QUESTO DISEGNO È TUTELATO DALLE LEGGI SUL COPYRIGHT - I TRASGRESSORI SARANNO PERSEGUITI A NORMA DI LEGGE</small>			

(UV) JET WG EC 30 / 45



(UV) JET WG EC 30/45

Num. articolo	Codice	Descrizione (ITA)	Descrizione (ENG)	Descrizione (FRA)	Descrizione (DEU)	Descrizione (ESP)
1	3822933	SCHEDA DISPLAY H20 8.8.15.24	DISPLAY ELECTRONIC BOARD H20 8.8.15.24	DISPLAY CIRCUIT H20 8.8.15.24	DISPLAY PLATINE H20 8.8.15.24	CIRCUITO DISPLAY H20 8.8.15.24
2	2641127	ELETTROVALVOLA 3 VIE 230V	SOLENOID VALVE FOR JET 230V	ELECTROVANNE POUR JET 230V	3-WEGE-MAGNETVENTIL 230V	ELECTROVALVULA 3 VIAS 230V
3	1761101604	MOTOVENTILATORE 230V	MOTOR FAN 230V	VENTILATEUR 230V	LUFTER 230V	MOTOVENTILADOR 230V
4	1601124	CONDENSATORE	CONDENSER	CONDENSATEUR	KONDENSATOR	CONDENSADOR
5	099002	RIDUTTORE PRESSIONE CO2 BOMBOLA USA F	DISPOSABLE CO2 PRESSURE REDUCER	REDUCTEUR DE PRESSION BOUTEILLE A JETER	DRUCKMINDERER F. WEGWERF-CO-FLASCHE	REDUCTOR PRESSION BOMBONA DESECHABLE
5	099003	RIDUTTORE PRESSIONE CO2 BOMBOLA	RECHARGEABLE CO2 PRESSURE REDUCER	REDUCTEUR DE PRESSION BOUTEILLE	DRUCKMINDERER F. MEHRWEG-CO2-FLASCHE	REDUCTOR PRESSION BOMBONA RECARGABLE
6	170111008	PANNELLO POSTERIORE	BACK PANEL	PANNEAU POSTERIEUR	RÜCKSEITIGES PANEEL	PANEL POSTERIOR
7	1501521	POMPA DI AGITAZIONE 230V	AGITATION PUMP 230V	POMPE D'AGITATION 230V	RUHRPUMPE 230V	BOMBA DE AGITACION 230V
8	3822714	INTERRUTTORE 115/230V	SWITCH 115/230V	INTERRUPTEUR 115/230V	SCHALTER 115/230V	INTERRUPTOR 115/230V
9	3824929	TERMOSTATO PER BANCO DI GHIACCIO	THERMOSTAT FOR ICE BANK	THERMOSTAT POUR BANC DE GLACE	THERMOSTAT FÜR EISBANK	TERMOSTATO PARA BANCO HIELO
10	1761304005	MOTORE PER POMPA 230V	MOTOR FOR PUMP 230V	MOTEUR POUR POMPE 230V	MOTOR F. PUMPE 230V	MOTOR PARA BOMBA 230V
11	1761517006	POMPA A PAI FTTF (100 lt/h)	PUMP (100 Lt/h)	POMPE (100 Lt/h)	PUMPE (100 Lt/h)	BOMBA (100 Lt/h)
12	3822931	CONTROLLO LIVELLO 230V WG EC 9.9.04.69	LEVEL CONTROL 230V WG EC 9.9.04.69	CONTROLE NIVEAU 230V WG EC 9.9.04.69	WASSERSTANDS-KONTROLLE 230V WG EC 9.9	CONTROL NIVEL 230V WG EC 9.9.04.69
13	1581196	COMPRESSORE GD36 230V-50Hz	GD36 COMPRESSOR 230V-50Hz	COMPRESSEUR GD36 230V-50Hz	VERDICHTER GD36 230V-50Hz	COMPRESOR GD36 230V-50Hz
14	2641131	REGOLATORE DI FLUSSO	FLOW CONTROL	REGULATEUR DE FLUX	WASSERFLUSS REGLER	REGULADOR DE FLUJO
15	2521419	VALVOLA NON RITORNO ACQUA	CARBONATING UNIT WATER INLET PIPING	RACCORD ENTREE EAU GASATEUR	ANSCHLUSS KOHLENSAUREVERSETZER-WASSE	UNION DE ENTRADA AGUA CARBONATADOR
16	2521418	VALVOLA NON RITORNO CO2	CARBONATING UNIT CO2 INLET PIPING	RACCORD ENTREE CO2 GASATEUR	ANSCHLUSS KOHLENSAUREVERSETZER-CO2-ZU	UNION DE ENTRADA CO2 CARBONATADOR
17	2541504	GASATORE INOX COMPL 1 LT UNA SONDA	1 lt 1 probe S.S. CARBONATING UNIT	GASATEUR INOX COMPLET 1lt 1 sonde	KOHLensaUREVERSETZER AUS EDELSTAHL	CARBONATADOR INOX COMPL. 1 L 1 SONDA
18	815011109	BANCO DI GHIACCIO COMPLETO WG 30 LT/H	COMPLETE ICE BANK - WG 30 LT/H 230V	BANC DE GLACE COMPLET - WG 30 LT/H 230V	KOMPLETTE EISBANK - WG 30 LT/H 230V	BANCO DE HIELO COMPLETO - WG 30 LT/H 230V
18	815011111	BANCO DI GHIACCIO COMPLETO WG 45 LT/H	COMPLETE ICE BANK - WG 45 LT/H 230V	BANC DE GLACE COMPLET - WG 45 LT/H 230V	KOMPLETTE EISBANK - WG 45 LT/H 230V	BANCO DE HIELO COMPLETO - WG 45 LT/H 230V
19	170111000	BASE	BASE	SOCLE	BASIS	BASE
20	170111009	INVOLUCRO (GRIGIO)	CABINET (GREY)	ENVELOPPE (GRIS)	GEHAUSE (GRAU)	RECEPTACULO (GRIS)
20	170111093	INVOLUCRO (NERO)	CABINET (BLACK)	ENVELOPPE (NOIR)	GEHAUSE (SCHWARZ)	RECEPTACULO (NEGRO)
22	3822934	CAVO COLLEGAMENTO L=400 mm 8.9.25.66	CABLE L=400 mm 8.9.25.66	CABLE ELECTRIQUE L=400 mm 8.9.25.66	STROM CABLE L=400 mm 8.9.25.66	CABLE L=400 mm 8.9.25.66
25	2521120	AREFATORE	PLASTIC AERATOR	AERATEUR	LUFTER	AIREADOR
26	2521119	BECCUCCIO INOX AREATORE	STAINLESS STEEL TAP SPOUT	BEC DISTRIBUTEUR INOX	EDELSTAHL-SPENDERDUSE	PICO DISTRIBUIDOR INOX
27	2781628	VASCETTA + GRIGLIA GRIGIA	DRIP TRAY - GRILL GREY	RECUEILLE GOUTTES - GRILLE GRIS	TROPFWANNE M. GITTERROST - GRAU	CUBETA C/REJILLA GRIS
27	816030057	VASCETTA + GRIGLIA SYLVER (VERNICIATA)	DRIP TRAY - GRILL SYLVER (PAINTED)	RECUEILLE GOUTTES - GRILLE SYLVER (PEINT)	TROPFWANNE M. GITTERROST - SYLVER (ANGE	CUBETA C/REJILLA SYLVER (PINTADA)
28	2781497	FRONTALE ANTERIORE GRIGIO	GREY FRONT PANEL	PANNEAU AVANT GRIS	GRAUE VORDERE FRONT	FRONTAL ANTERIOR GRIS
28	816030058	FRONTALE ANTERIORE SYLVER (VERNICIATO)	SYLVER FRONT PANEL (PAINTED)	PANNEAU AVANT SYLVER (PEINT)	SYLVER VORDERE FRONT (ANGESTRICHEN)	FRONTAL ANTERIOR SYLVER (PINTADO)
29	2781618	FRONTALE SUPERIORE GRIGIO WG EC	GREY TOP PANEL WG EC	PANNEAU SUPERIEUR GRIS WG EC	GRAUE OBERE FRONT WG EC	FRONTAL SUPERIOR GRIS WG EC
29	2781652	FRONTALE SUPERIORE NERO WG EC	BLACK TOP PANEL WG EC	PANNEAU SUPERIEUR NOIR WG EC	SCHWARZ OBERE FRONT WG EC	FRONTAL SUPERIOR NEGRO WG EC
30	2781494	COPRI-BASE GRIGIA	GREY BASE COVER	COUVRE-BASE GRIS	GRAUE BASISABDECKUNG	CUBRE-BASE GRIS
30	2781651	COPRI-BASE NERA	BLACK BASE COVER	COUVRE-BASE NOIR	SCHWARZ BASISABDECKUNG	CUBRE-BASE NEGRA
31	815614018	SONDA CAVO L=1000mm 9.0.18.17	PROBE CABLE L=1000mm 9.0.18.17	CABLE CAPTEUR L=1000mm 9.0.18.17	SONDE KABEL L=1000mm 9.0.18.17	SENSOR CABLE L=1000mm 9.0.18.17
32	5561373	ETICHETTA PULSANTI SYLVER WG EC	WG EC BUTTONS LABEL SYLVER	ADHESIF POUR BOUTON SYLVER WG EC	TASTEN AUFKLEBER SYLVER WG EC	ADHESIVO PULSADORES SYLVER WG EC
32	5561366	ETICHETTA PULSANTI NERA WG EC	WG EC BUTTONS LABEL BLACK	ADHESIF POUR BOUTON NOIR WG EC	TASTEN AUFKLEBER SCHWARZ WG EC	ADHESIVO PULSADORES NEGRO WG EC
33	817010167	SCATOLA UV COMPI FTA 230 V				
35	3822913	LAMPADA UV 4 W				
36	3822501	ALIMENTATORE 230 V				
37	3822503	STARTER 230 V				
38	2781596	PIEDINO				
39	3821710	CAVO DI ALIMENTAZIONE				
43	3822906	CAVO COLLEGAMENTO L=800 mm	CABLE L=800 mm	CABLE ELECTRIQUE L=800 mm	STROM CABLE L=800 mm	CABLE L=800 mm
44	3822932	SCHEDA RELÉ 8.8.17.31	ELECTRONIC RELAY BOARD 8.8.17.31	RELAIS CIRCUIT 8.8.17.31	RELE' PLATINE 8.8.17.31	CIRCUITO RELE' 8.8.17.31

(UV) JET TOP 30/45 WG EC

ITEM NUMBER ON DRAWING	PART NUMBER	DESCRIZIONE	DESCRIPTION
1	2521362	TERMINALE DRITTO JG 1/4M-8	STRAIGHT ADAPTOR JG 1/4M-8
2	2521414	PASSAPARÈTE OTT.NICHELATO 1/4 FF	BULKHEAD CONNECTOR 1/4FF
5	2801363	TUBO PE 8x6	PE HOSE 8x6
7	2521360	TERMINALE DRITTO JG 3/8M-8	STRAIGHT ADAPTOR JG 3/8M-8
9	2541504	GASATORE 1 LT. 1 SONDA	CARBONATING UNIT
17	2641127	ELETTROVALVOLA TRE VIE 230 V	THREE EXIT SOLENOID VALVE 230 V
21	099002	RIDUTTORE DI PRESSIONE CO2	CO2 PRESSURE REDUCER
25	2521327	RONDELLA RIDUZIONE PORTATA	FLOW REDUCTION
26	2801368	TUBO PE 6x4	PE HOSE 6 X 4
39	4741312	GHIERA PER ELETTROVALVOLA	PLASTIC NUT
40	4741734	RIDUTTORE DI FLUSSO	FLOW REDUCTION
		RACCORDO ENTRATA ACQUA	
44	2521419	GASATORE	CARBONATING WATER INLET PIPING
45	2521418	RACCORDO ENTRATA CO2 GASATORE	CARBONATING CO2 INLET PIPING
45	2641527	SONDA 112 mm + BOCOLA	112 mm PROBE + BUSH
45	2641526	VALVOLA SICUREZZA	SECURITY VALVE
47	2641131	COMPENSATORE PER WG	FLOW CONTROL
48	2521413	ADATTATORE DRITTO JG 1/4M-6	STRAIGHT ADAPTOR JG 1/4M-6
49	2521436	RIDUZIONE A GOMITO JG 8-6	REDUCTION ELBOW JG 8-6
50	2521363	ADATTATORE A CODOLO 3/8M-8	STEM ADAPTOR JG 3/8M-8
52	1761517006	POMPA A PALETTE (100 LT/H)	PUMP 104 ROTOFLOW
53	2521385	TEE JG 6	EQUAL TEE JG 6
54	1601325	SERPENTINA INOX 30	STAINLESS STEEL COIL 30
54	1601336	SERPENTINA INOX 45	STAINLESS STEEL COIL 45
55	2521415	PASSAPARÈTE JG 6	BULKHEAD CONNECTOR JG 6
56	2521421	ADATTATORE DRITTO JG 1/8M-6	STRAIGHT ADAPTOR JG 1/8M-6
57	2521420	ADATTATORE DRITTO JG 1/4F-6	STRAIGHT ADAPTOR JG 1/4F-6
58	2521118	RACCORDO EROGAZIONE	SPOUT CONNECTOR
59	2661526	GUARNIZIONE AERATORE	AERATOR GASKET
60	2521120	AERATORE	AERATOR POM
61	2521119	BECCUCCIO INOX AERATORE	STAINLESS STEEL TAP SPOUT