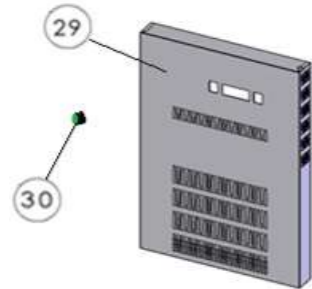


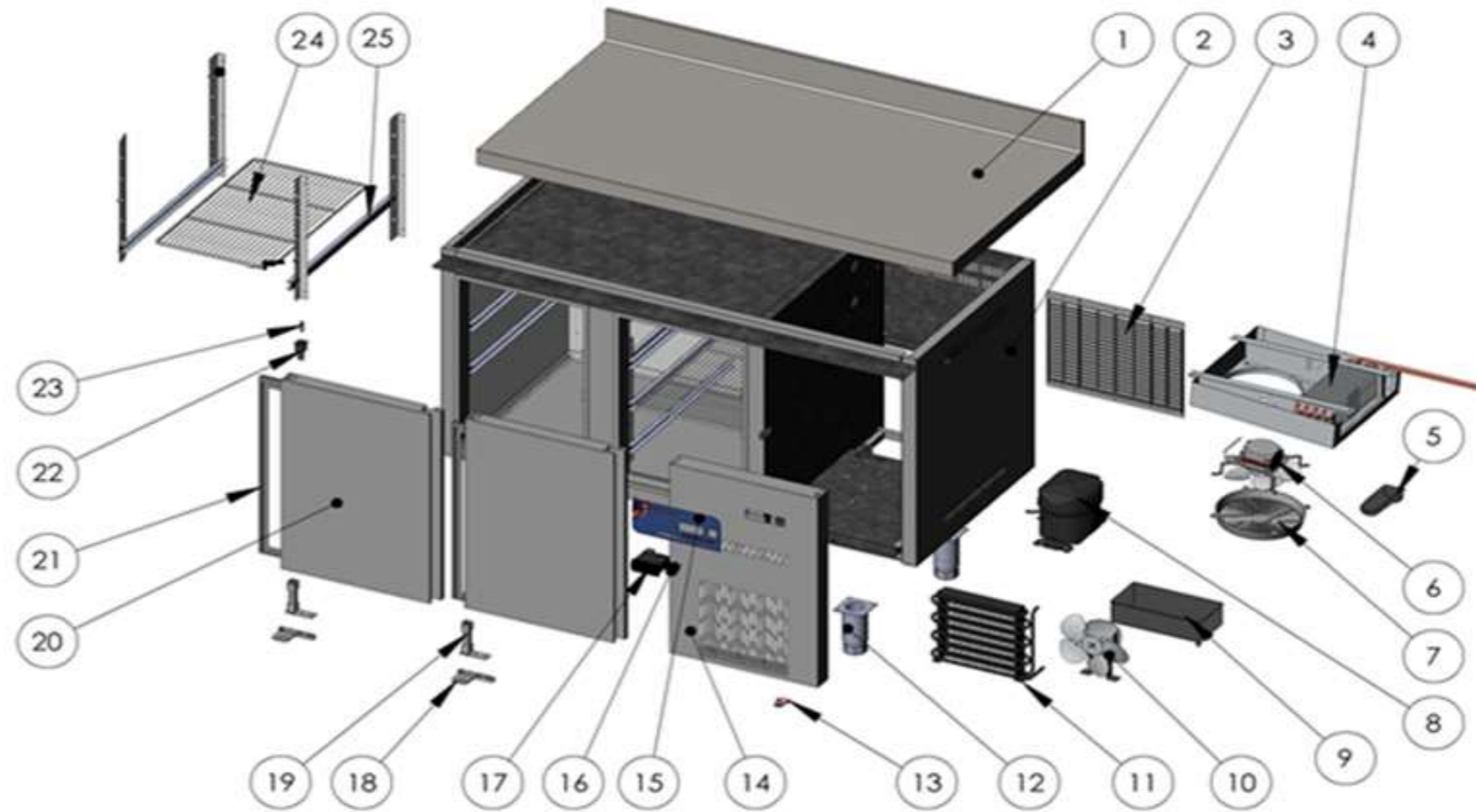
PUERTA DE CRISTAL MODELO TGRV-S
GLAZING DOOR MODEL TGRV-S



REJILLA CUADRO DE MANDOS MODELO TGRV-S
CONTROL PANEL MODEL TGRV-S



LUZ LED TGRV-S
LED LIGHT TGRV-S



| Nº | DESCRIPCIÓN | DESCRIPTION | TGR-135-S | PVP | TGR-180-S | PVP | TGR-225-S | PVP |
|----|-----------------------------|----------------------------|------------|-----|------------|-----|------------|-----|
| 1 | ENCIMERA | WORKTOP | M181010485 | | M181010486 | | M181010487 | |
| 2 | COSTADO EXT. LADO GRUPO | ESTERNAL SIDE | M109010044 | | M109010044 | | M109010044 | |
| 3 | REJILLA TRASERA MOTOR | REAR MOTOR GRILLE | 6003010181 | | 6003010181 | | 6003010181 | |
| 4 | EVAP. COMPLETO | COMPLET EVAPORATOR | 6029010159 | | 6029010159 | | 6029010143 | |
| 5 | DESAGUE CANALIZADOR | DRAIN CANAL | 6003010184 | | 6003010184 | | 6003010184 | |
| 6 | VENTILADOR DEL EVAPORADOR | EVAPORATOR FAN | 6021050072 | | 6021050072 | | 6021050072 | |
| 7 | REJILLA VENTILADOR | FAN GRILLE | 6003010475 | | 6003010475 | | 6003010475 | |
| 8 | COMPRESOR | COMPRESSOR | 6021010003 | | 6021010204 | | 6021010184 | |
| 9 | BANDEJA DE EVAP. AUTOMÁTICA | AUTOMATIC EVAPORATION TRAY | 6003010023 | | 6003010023 | | 6003010023 | |
| 10 | VENT. DEL CONDENSADOR | CONDENSER FAN | 6021050004 | | 6021050004 | | 6021050002 | |
| 11 | CONDENSADOR | CONDENSER | 6029020008 | | 6029020008 | | 6029020002 | |
| 12 | PATA REGULABLE | ADJUSTABLE FEET | 6007050017 | | 6007050017 | | 6007050017 | |
| 13 | SOPORTE GIRO REJILLA | REAR SUPPORT TURN | 6033090090 | | 6033090090 | | 6033090090 | |
| 14 | REJILLA MOTOR | MOTOR GRILLE | M109010994 | | M109010994 | | M109010994 | |
| 15 | PEGATINA LOGOTIPO | LOGOTYPE STIKER | 6023010610 | | 6023010610 | | 6023010610 | |
| 16 | INTERRUPTOR GENERAL | MAIN SWITCH ON/OFF | 6021130020 | | 6021130020 | | 6021130020 | |

| Nº | DESCRIPCIÓN | DESCRIPTION | TGR-135-S | PVP | TGR-180-S | PVP | TGR-225-S | PVP |
|----|------------------------------------|----------------------------|------------|-----|------------|-----|------------|-----|
| 17 | TERMOSTATO CAREL | THERMOSTAT CAREL | 6021350106 | | 6021350106 | | 6021350106 | |
| | SONDA | PROBE | 6021350083 | | 6021350083 | | 6021350083 | |
| 18 | SOPORTE BISAGRA INFERIOR IZQUIERDO | LOWEWR LEFT HINGE SUPPORT | 6033010098 | | 6033010098 | | 6033010098 | |
| 19 | BISAGRA DE TORSION | TORSION HINGE | 6033010100 | | 6033010100 | | 6033010100 | |
| 20 | PUERTA 631x435 mm | DOOR 631x435 mm | M169010122 | | M169010122 | | M169010122 | |
| 21 | BURLETE 385x580 mm | SEAL 385x580 mm | 6045010119 | | 6045010119 | | 6045010119 | |
| 22 | CAJA ALOJAMIENTO EJE | HINGE PIN SUPPORT | 6003010136 | | 6003010136 | | 6003010136 | |
| 23 | EJE PUERTA | SPINDLE DOOR | 6033090064 | | 6033090064 | | 6033090064 | |
| 24 | ESTANTE PARRILLA 530x325 mm | LAMINATED SHELF 530x325 mm | 6027010003 | | 6027010003 | | 6027010003 | |
| 25 | JUEGO DE GUIAS "U" 562mm | SET OF SLIDES 562 mm | 6033050027 | | 6033050027 | | 6033050027 | |
| 26 | BURLETE 390X585mm | SEAL 390X585mm | 6045010119 | | 6045010119 | | 6045010119 | |
| 27 | PUERTA DE CRISTAL | GLAZING DOOR | M169050034 | | M169050034 | | M169050034 | |
| 28 | TIRADOR PUERTA DE CRISTAL | HANDLE DOOR | 6033010148 | | 6033010148 | | 6033010148 | |
| 29 | REJILLA MOTOR TGRV-S | MOTOR GRILLE TGRV-S | M109010995 | | M109010995 | | M109010995 | |
| 30 | INTERRUPTOR LUZ TGRV-S | LIGHT MAIN SWITCH TGRV-S | 6021130051 | | 6021130051 | | 6021130051 | |
| 31 | TRANSFORMADOR TGRV-S | TRANSFORMER TGRV-S | 6021290109 | | 6021290110 | | 6021290110 | |
| 32 | LUZ LED TGRV-S | LED LIGHT TGRV-S | 6021290113 | | 6021290113 | | 6021290113 | |