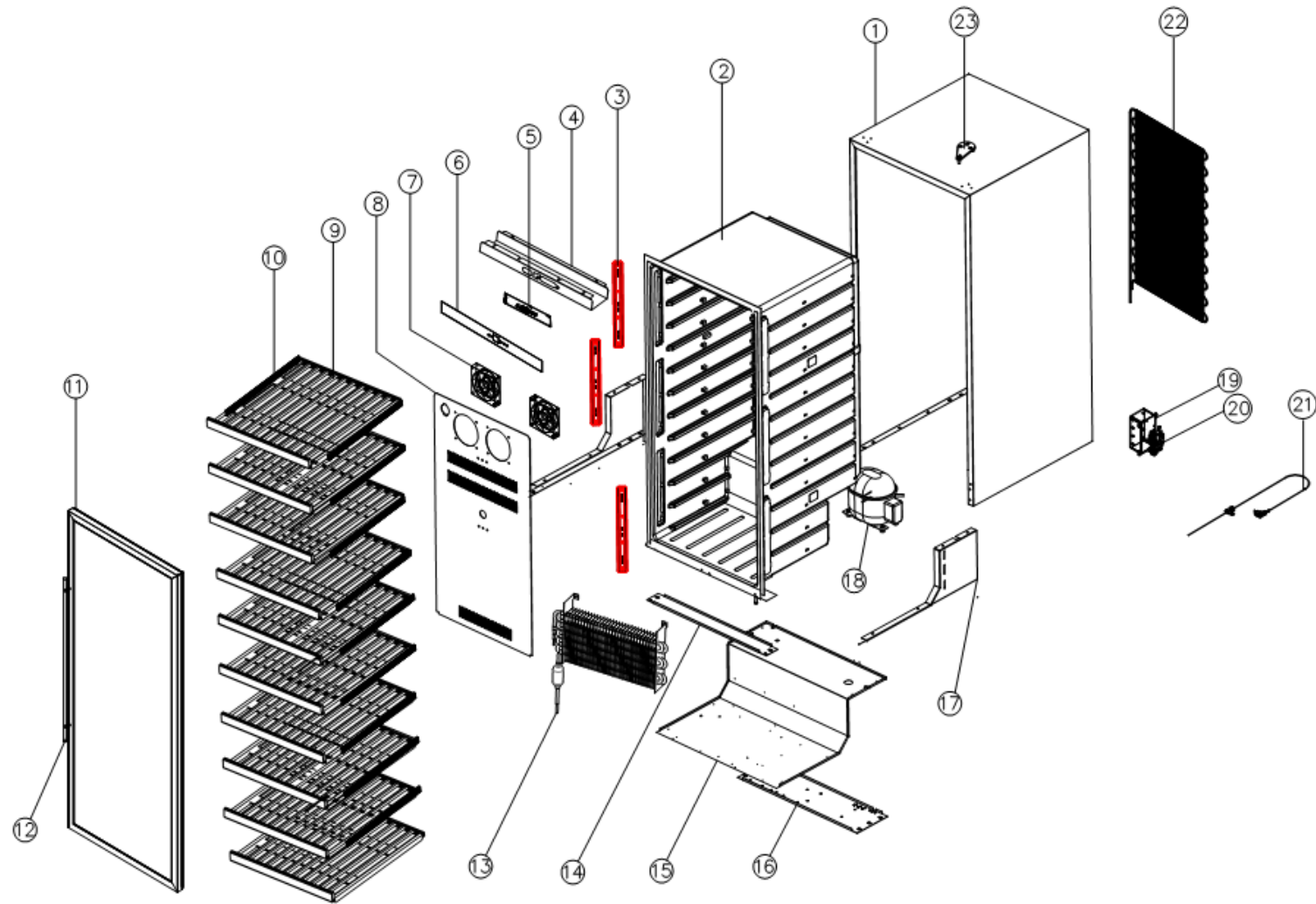


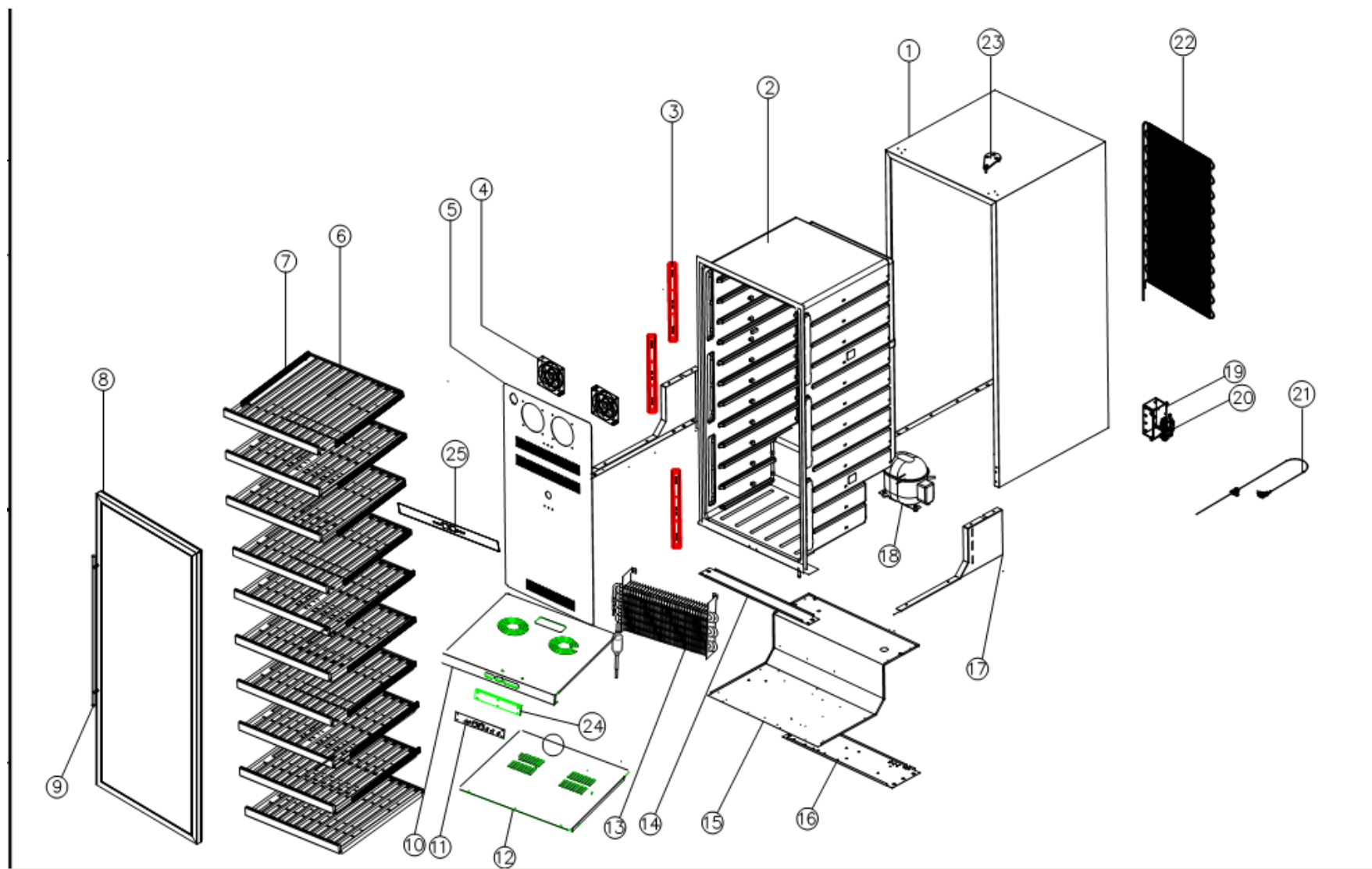
Explored view of YC-298A



Parts No.	Name
2	inside Cabinet
3	Light
4	control PCB box
5	PCB
6	PCB panel
7	inside fan
8	air flow cover
9	shelf
10	optional, Standard without this)
11	Glass door
12	Door handle
13	Evaporator
14	Crossband
15	under plate
16	compressor plate
17	strength plate
18	compressor
19	Power PCB box
20	Power PCB
21	Cabel
22	Condensor
23	upper hinge

Explored view of YC-298A

Explored view of YC-298B



Explored view of YC-298B

Parts No. Name

- 1 outside Cabinet
- 2 inside Cabinet
- 3 Light
- 4 inside fan
- 5 air flow cover
- 6 shelf
- 7 rail balling(optional, Standard without this)
- 8 Glass door
- 9 Door handle
- 10 upper cover of middle plate
- 11 Control PCB
- 12 Lower cover of middle plate
- 13 Evaporator
- 14 Crossband
- 15 under plate
- 16 compressor plate
- 17 strength plate
- 18 compressor
- 19 Power PCB box
- 20 Power PCB
- 21 Cabel
- 22 Condensor
- Explored view of YC-298B
- 24 back fix of PCB
- 25 Control PCB panel